

For Lease

Powerline Park 7

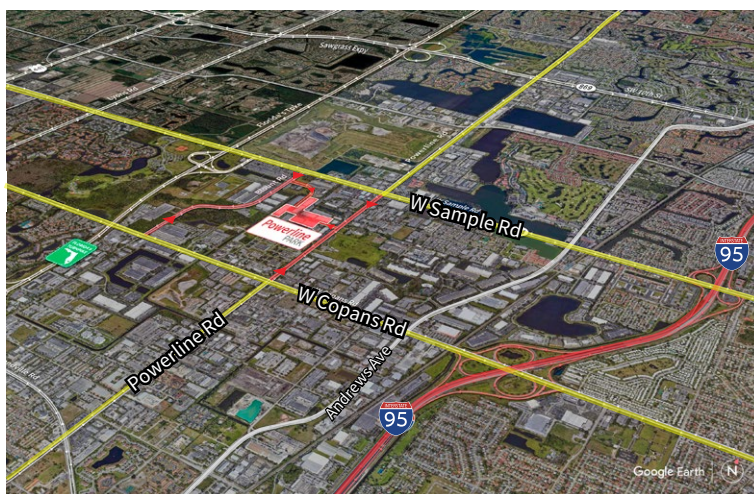
3012-3050 NW 25th Avenue
Pompano Beach, Florida 33069



Industrial Space For Lease
2,964 SF

Powerline Park 7

3012-3050 NW 25th Avenue, Pompano Beach, Florida 33069



Location

- Easy access off Sample Road and Powerline Road
- Excellent access to I-95 and the Florida Turnpike
- Equidistant to Fort Lauderdale/Hollywood International Airport and Palm Beach International Airport

Space Features

- 3012-3050 NW 25th Avenue, Bay 20
- 2,964 SF total
- 706 SF of office
- 18' clear height
- One (1) grade level door
- Available 11/1/2022
- Parking ratio: 2.0/1,000 sf



© 2022 Jones Lang LaSalle IP, Inc.

Yuri Quispe

D +1 954 233 3462

M +1 772 201 5305

yuri.quispe@am.jll.com

Peter Sheridan

D +1 954 653 3235

M +1 954 439 4941

peter.sheridan@am.jll.com

Peter Johnston

D +1 954 233 3429

M +1 954 980 3224

peter.johnston1@am.jll.com



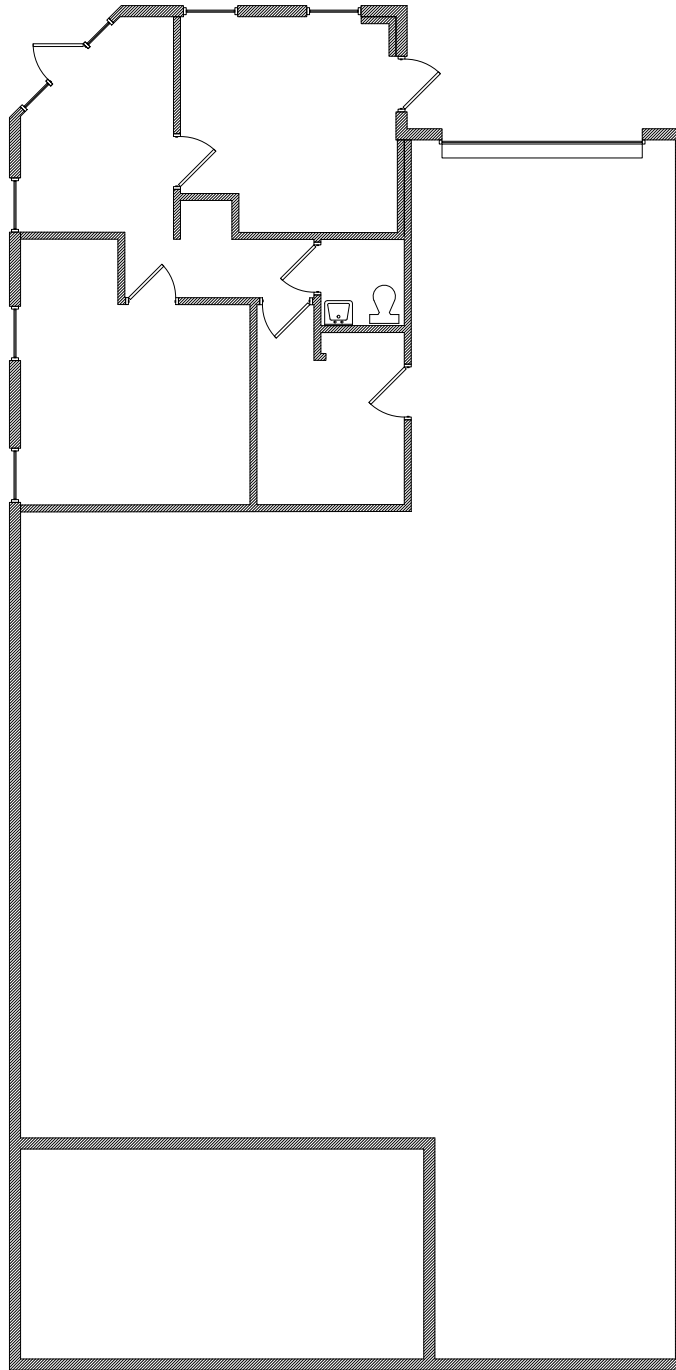
For Lease

Powerline Park 7

3012-3050 NW 25th Avenue, Pompano Beach, Florida 33069

Powerline Park 7 Floor Plan - Suite 20

Total: 2,964 SF
Warehouse: 2,258 SF
Office: 706 SF



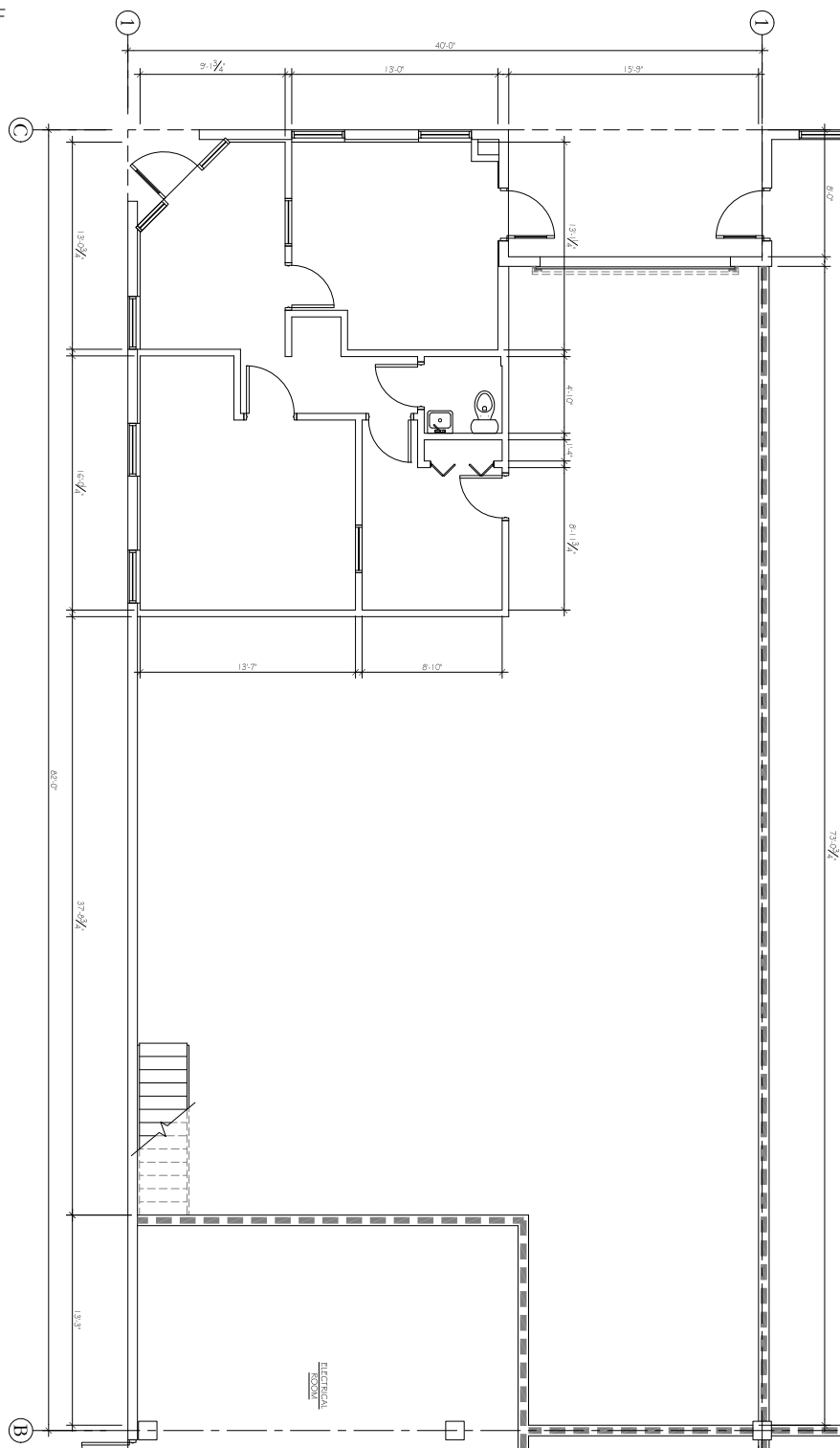
For Lease

Powerline Park 7

3012-3050 NW 25th Avenue, Pompano Beach, Florida 33069

Powerline Park 7 Floor Plan - Suite 20

Total: 2,964 SF
Warehouse: 2,258 SF
Office: 706 SF



For Lease

Powerline Park 7

3012-3050 NW 25th Avenue, Pompano Beach, Florida 33069

Powerline Park Site Plan

 - Subject Property



Building	Suite	Total (SF)	Warehouse (SF)	Office (SF)	Loading	Clear Height	Available Date
7	20	2,964	2,258	706	1 G	18'	11/1/2022

