

# For Lease

## Pompano Business Park 8

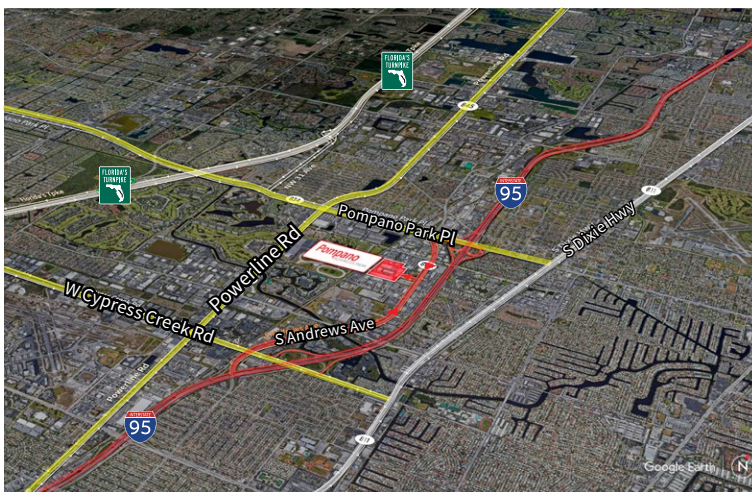
1601 SW 5th Court  
Pompano Beach, Florida 33069



Industrial Space For Lease  
**25,200 SF**

### Pompano Business Park 8

1601 SW 5th Court, Pompano Beach, Florida 33069



#### Location

- Easy access off Atlantic Blvd and Andrews Ave
- Excellent access to I-95 and the Florida Turnpike
- Equidistant to Fort Lauderdale/Hollywood International Airport and Palm Beach International Airport

#### Space Features

- Free-standing building
- 25,200 SF total
- 4,885 SF of office
- Divisible to 15,569 SF & 9,631 SF
- 18' clear height
- One (1) ramp
- Four (4) dock high doors
- Climatized warehouse
- Parking ratio: 2.0/1,000 sf



© 2022 Jones Lang LaSalle IP, Inc.

#### Yuri Quispe

D +1 954 233 3462

M +1 772 201 5305

yuri.quispe@am.jll.com

#### Peter Sheridan

D +1 954 653 3235

M +1 954 439 4941

peter.sheridan@am.jll.com

#### Peter Johnston

D +1 954 233 3429

M +1 954 980 3224

peter.johnston1@am.jll.com



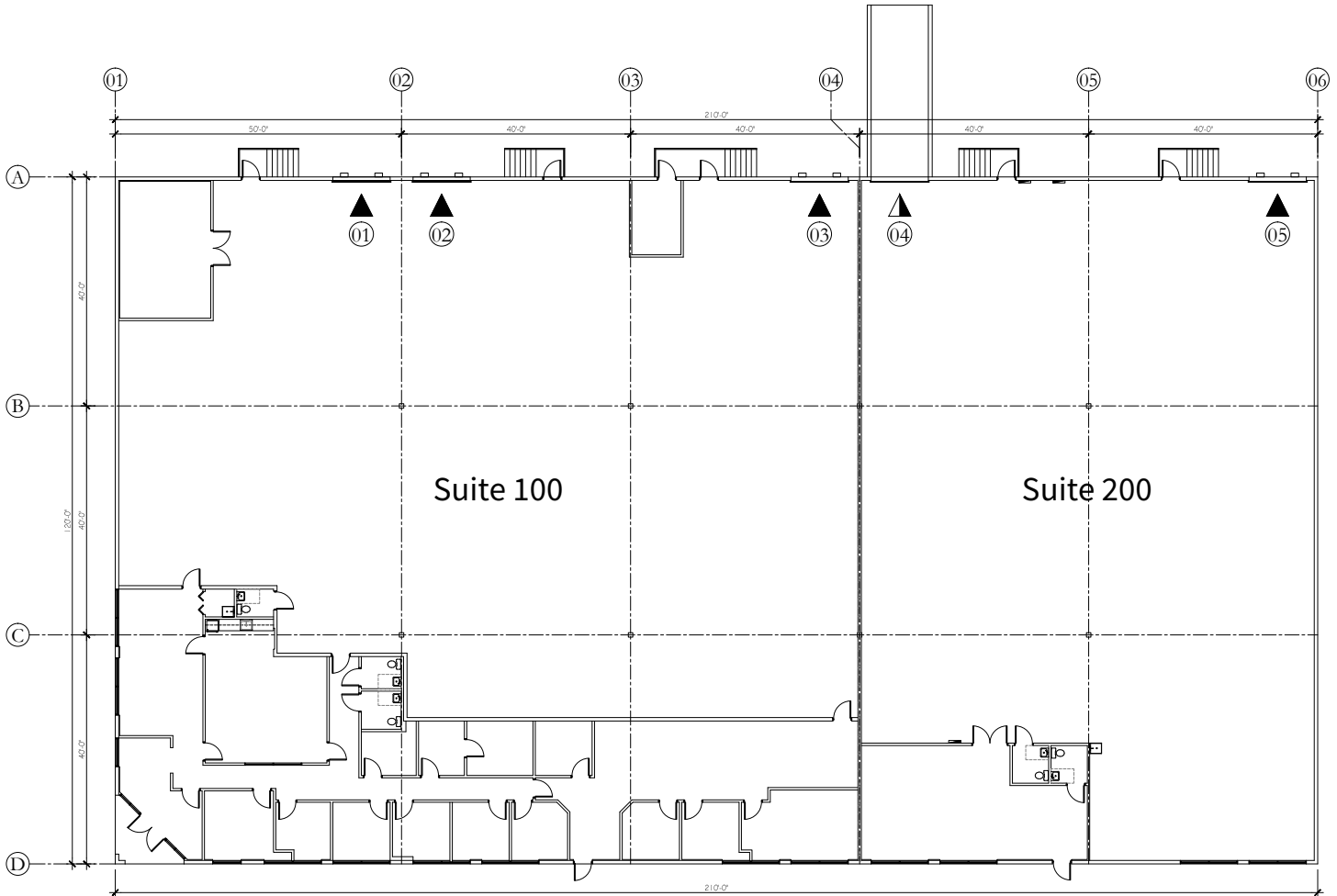
# For Lease

## Pompano Business Park 8

1601 SW 5th Court, Pompano Beach, Florida 33069

### Pompano Business Park 8 Floor Plan

Total: 25,200 SF  
Warehouse: 20,315 SF  
Office: 4,885 SF



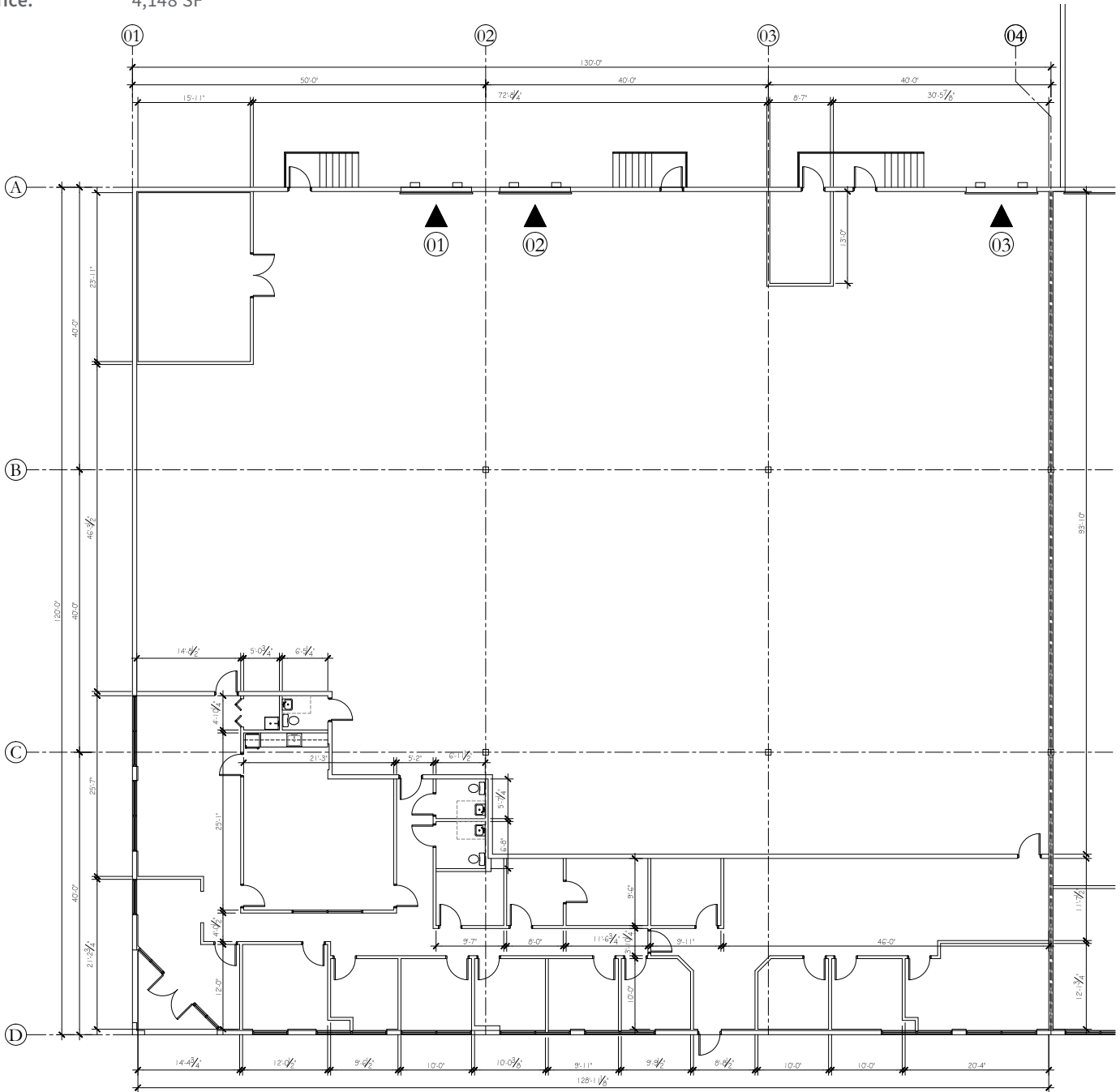
# For Lease

## Pompano Business Park 8

1601 SW 5th Court, Pompano Beach, Florida 33069

### Pompano Business Park 8 Floor Plan - Suite 100

Total: 15,569 SF  
Warehouse: 11,421 SF  
Office: 4,148 SF



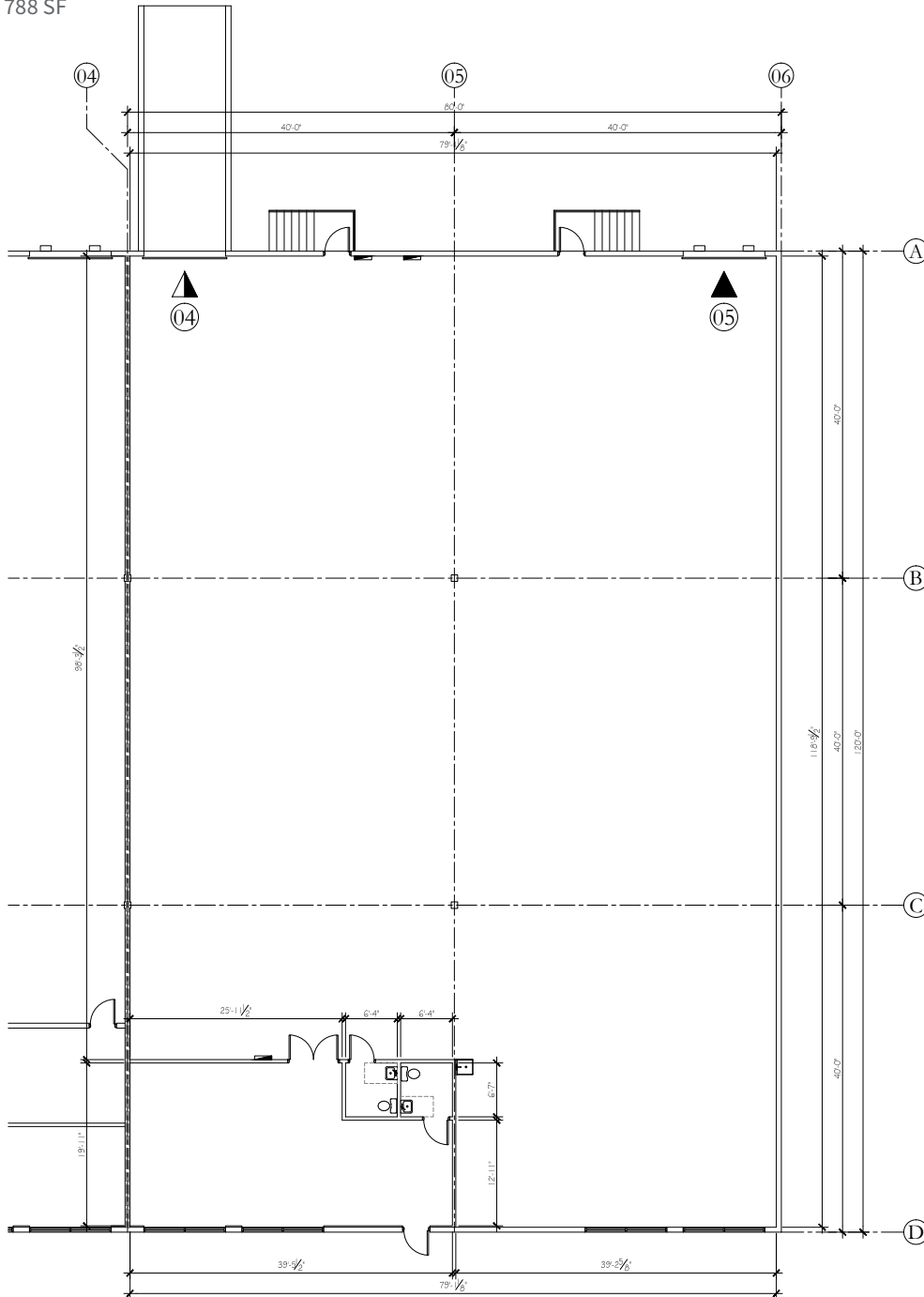
# For Lease

## Pompano Business Park 8

1601 SW 5th Court, Pompano Beach, Florida 33069

### Pompano Business Park 8 Floor Plan - Suite 200

Total: 9,631 SF  
Warehouse: 8,812 SF  
Office: 788 SF



# For Lease

## Pompano Business Park 8

1601 SW 5th Court, Pompano Beach, Florida 33069

### Pompano Business Park 8 Site Plan

■ - Subject Property



Building	Suite	Total (SF)	Warehouse (SF)	Office (SF)	Loading	Clear Height	Available Date
8	100 & 200	25,200	20,315	4,885	4 DH / 1 Ramp	18'	10/1/2022



# For Lease

## Pompano Business Park 8

1601 SW 5th Court, Pompano Beach, Florida 33069

### Pompano Business Park 8

#### Notes

---

---

---

---

---

---

---

---

---

---

---

---

---

---

---

---

---

---

---

---

---

---

---

---

**Yuri Quispe**  
D +1 954 233 3462  
M +1 772 201 5305  
yuri.quispe@am.jll.com

**Peter Sheridan**  
D +1 954 653 3235  
M +1 954 439 4941  
peter.sheridan@am.jll.com

**Peter Johnston**  
D +1 954 233 3429  
M +1 954 980 3224  
peter.johnston1@am.jll.com

