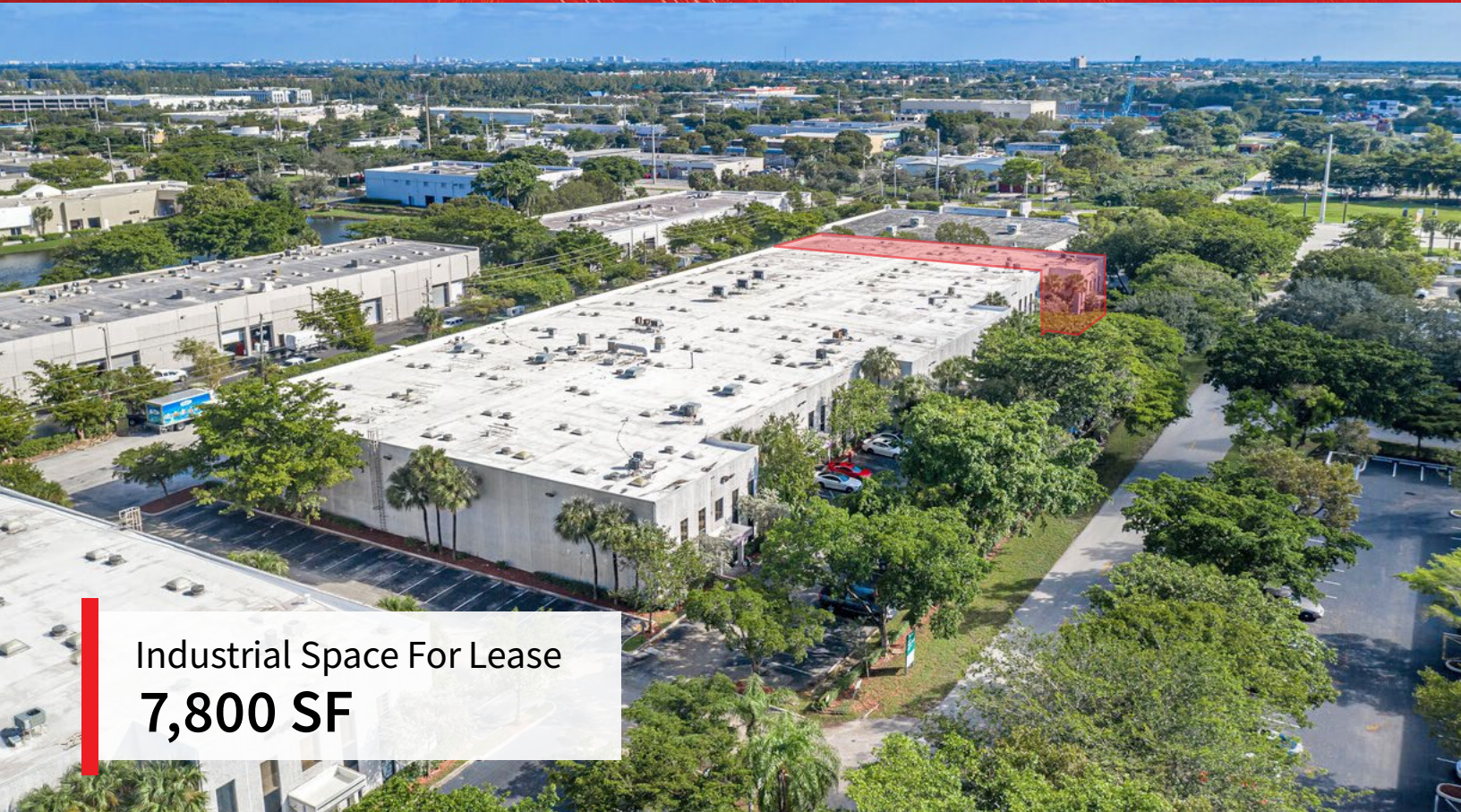


For Lease

Powerline Park I

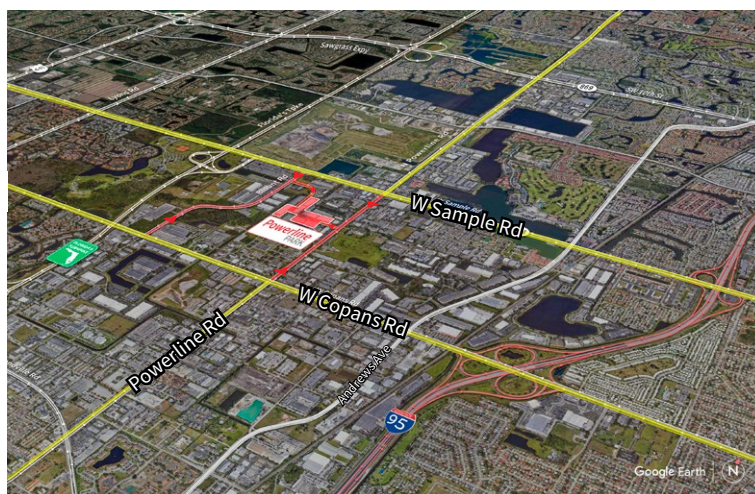
2201 - 2215 NW 30th Place
Pompano Beach, Florida 33069



Industrial Space For Lease
7,800 SF

Powerline Park I

2201 - 2215 NW 30th Place, Pompano Beach, Florida 33069



Location

- Easy access off Sample Road and Powerline Road
- Excellent access to I-95 and the Florida Turnpike
- Equidistant to Fort Lauderdale/Hollywood International Airport and Palm Beach International Airport

Space Features

- 2203 NW 30th Place, Bay 1
- 7,800 SF total
- 840 SF of office
- 24' clear height
- One (1) grade level door
- One (1) dock high door (well)
- Available 7/1/2022
- Parking ratio: 2.0/1,000 sf



© 2022 Jones Lang LaSalle IP, Inc.

Yuri Quispe

D +1 954 233 3462

M +1 772 201 5305

yuri.quispe@am.jll.com

Peter Sheridan

D +1 954 653 3235

M +1 954 439 4941

peter.sheridan@am.jll.com

Peter Johnston

D +1 954 233 3429

M +1 954 980 3224

peter.johnston1@am.jll.com



For Lease

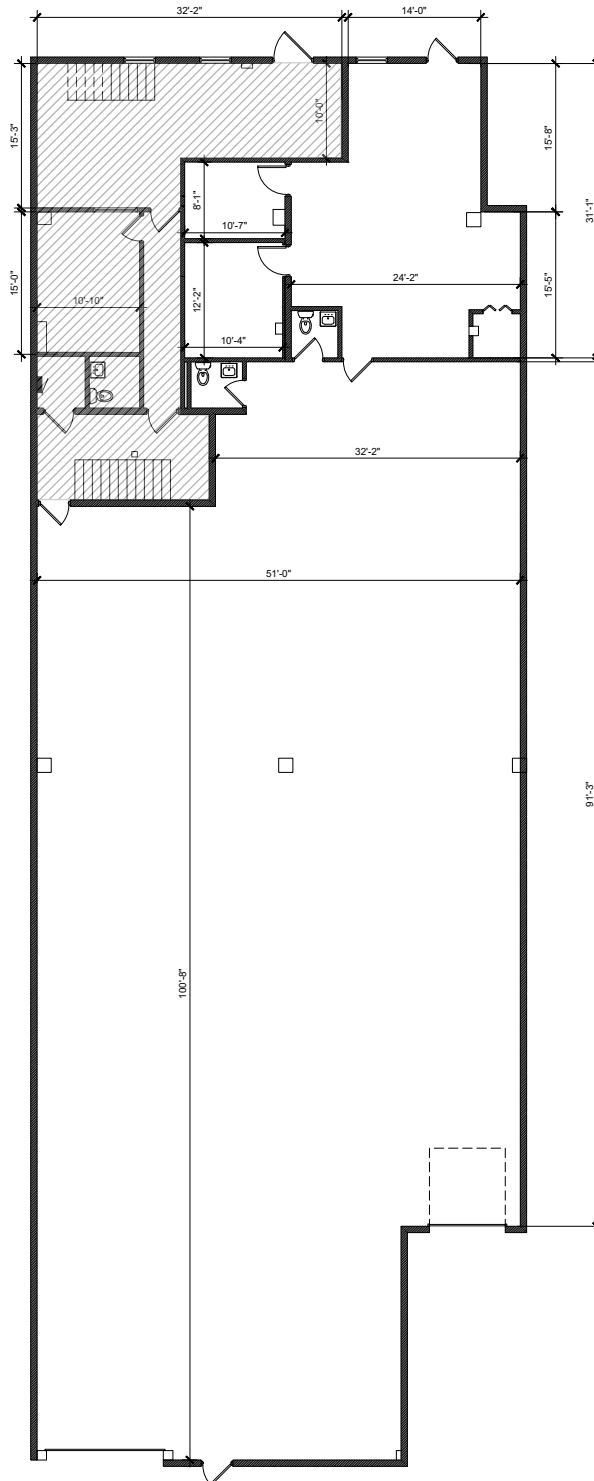
Powerline Park I

2201 - 2215 NW 30th Place, Pompano Beach, Florida 33069

Powerline Park I Floor Plan - Suite 1

Total: 7,800 SF
Warehouse: 6,960 SF
Office: 840 SF

 Area Not Included



For Lease

Powerline Park I

2201 - 2215 NW 30th Place, Pompano Beach, Florida 33069

Powerline Park Site Plan

 - Subject Property



Building	Suite	Total (SF)	Warehouse (SF)	Office (SF)	Loading	Clear Height	Available Date
1	1	7,800	6,960	840	1 DH / 1 G	24'	7/1/2022



