

# For Lease

## Powerline Park 6

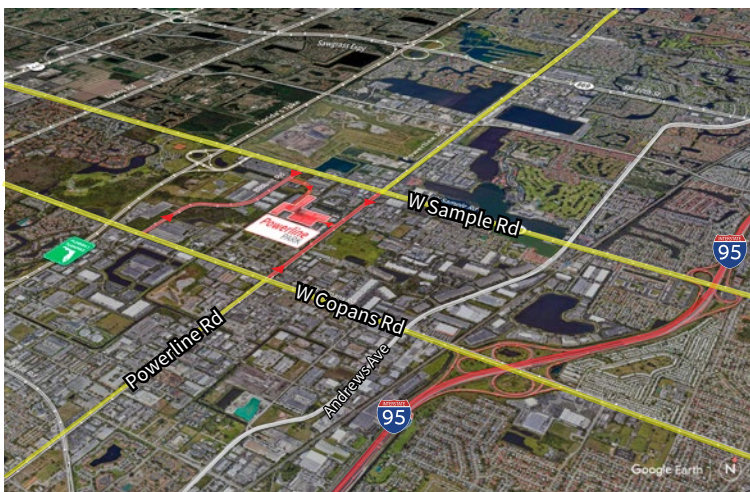
3000 NW 25th Avenue  
Pompano Beach, Florida 33069



Industrial Space For Lease  
**2,970 SF**

### Powerline Park 6

3000 NW 25th Avenue, Pompano Beach, Florida 33069



#### Location

- Easy access off Sample Road and Powerline Road
- Excellent access to I-95 and the Florida Turnpike
- Equidistant to Fort Lauderdale/Hollywood International Airport and Palm Beach International Airport

#### Space Features

- 3000 - 6 NW 25th Avenue
- 2,970 SF total
- 984 SF of office
- Mezzanine above office area
- 18' clear height
- One (1) grade level door
- One (1) dock high door (well)
- Available now
- Parking ratio: 2.0/1,000 sf



© 2022 Jones Lang LaSalle IP, Inc.

**Yuri Quispe**

D +1 954 233 3462

M +1 772 201 5305

yuri.quispe@am.jll.com

**Peter Sheridan**

D +1 954 653 3235

M +1 954 439 4941

peter.sheridan@am.jll.com

**Peter Johnston**

D +1 954 233 3429

M +1 954 980 3224

peter.johnston1@am.jll.com



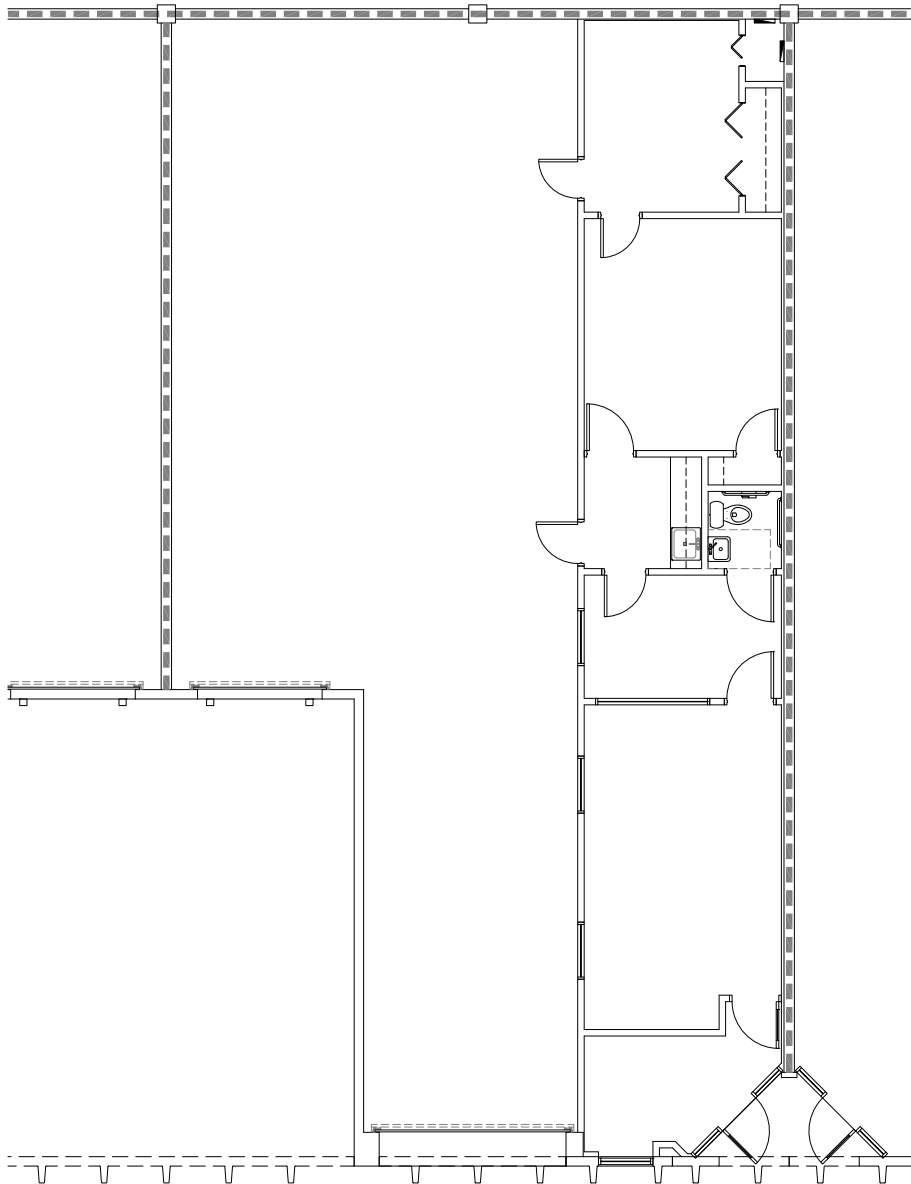
For Lease

# Powerline Park 6

3000 NW 25th Avenue, Pompano Beach, Florida 33069

## Powerline Park 6 Floor Plan - Suite 3000 - 6

Total:	2,970 SF
Warehouse:	1,986 SF
Office:	984 SF



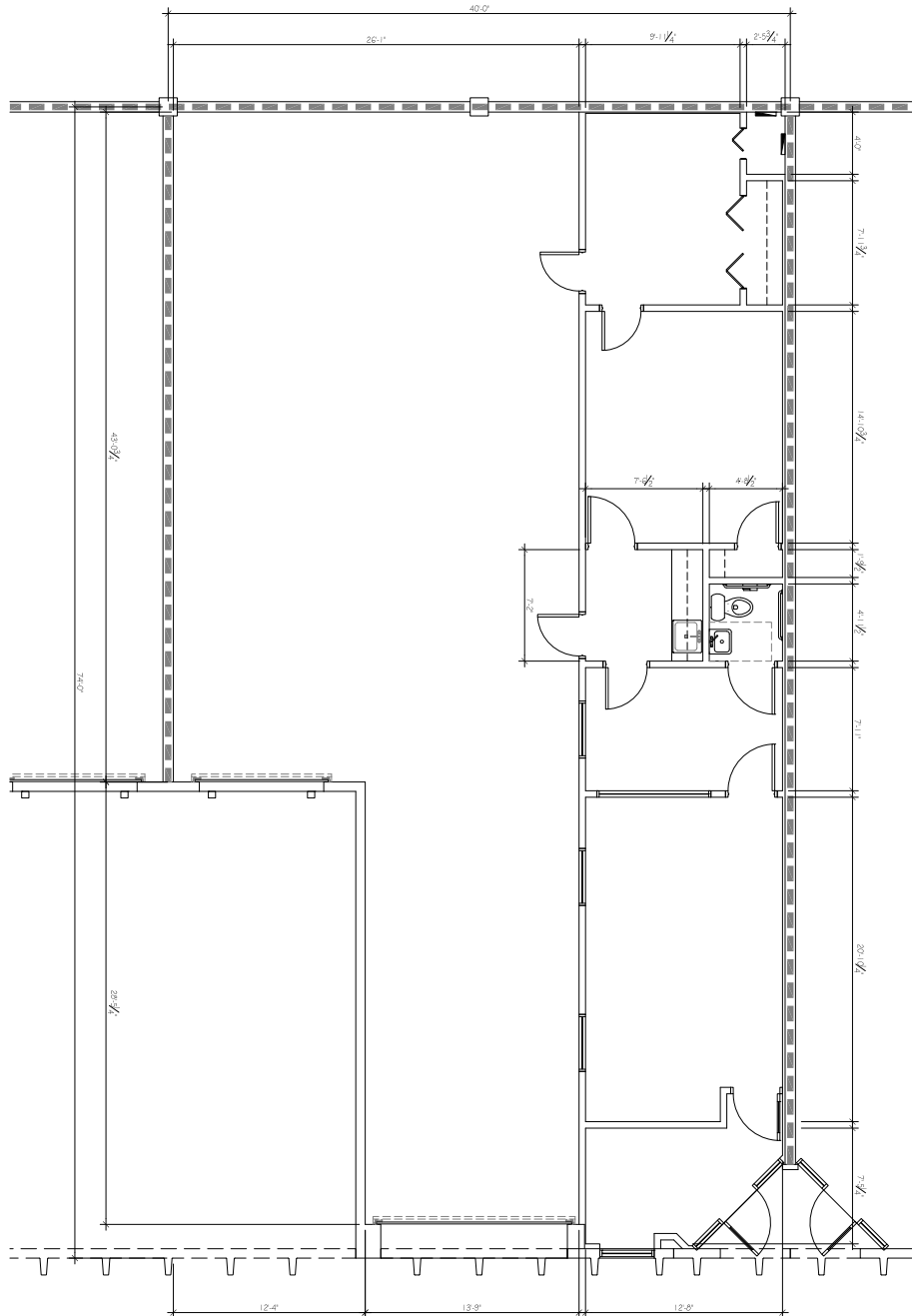
# For Lease

## Powerline Park 6

3000 NW 25th Avenue, Pompano Beach, Florida 33069

### Powerline Park 6 Floor Plan - Suite 3000 - 6

Total: 2,970 SF  
Warehouse: 1,986 SF  
Office: 984 SF





# For Lease

## Powerline Park 6

3000 NW 25th Avenue, Pompano Beach, Florida 33069

### Powerline Park Site Plan

 - Subject Property



Building	Suite	Total (SF)	Warehouse (SF)	Office (SF)	Loading	Clear Height	Available Date
6	3000 - 6	2,970	1,986	984	1 DH / 1 G	18'	Now

