

For Lease

Powerline Park 3

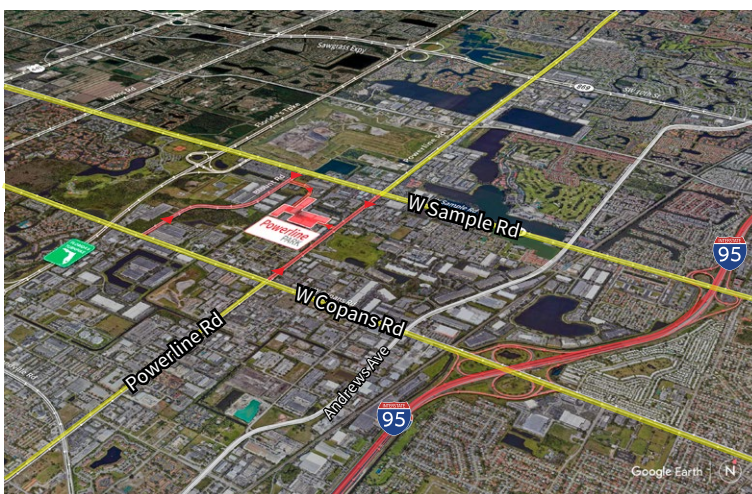
2280 - 2300 NW 30th Place
Pompano Beach, Florida 33069



Industrial Space For Lease
15,000 SF

Powerline Park 3

2280 - 2300 NW 30th Place, Pompano Beach, Florida 33069



Location

- Easy access off Sample Road and Powerline Road
- Excellent access to I-95 and the Florida Turnpike
- Equidistant to Fort Lauderdale/Hollywood International Airport and Palm Beach International Airport

Space Features

- 2280 - 2300 NW 30th Place, Bay 3 & 4
- 15,000 SF total
- 3,096 SF of office
- 20' clear height
- Two (2) grade level doors
- Two (2) dock high doors (wells)
- Available 8/1/2022
- Parking ratio: 2.0/1,000 sf



© 2022 Jones Lang LaSalle IP, Inc.

Yuri Quispe

D +1 954 233 3462

M +1 772 201 5305

yuri.quispe@am.jll.com

Peter Sheridan

D +1 954 653 3235

M +1 954 439 4941

peter.sheridan@am.jll.com

Peter Johnston

D +1 954 233 3429

M +1 954 980 3224

peter.johnston1@am.jll.com



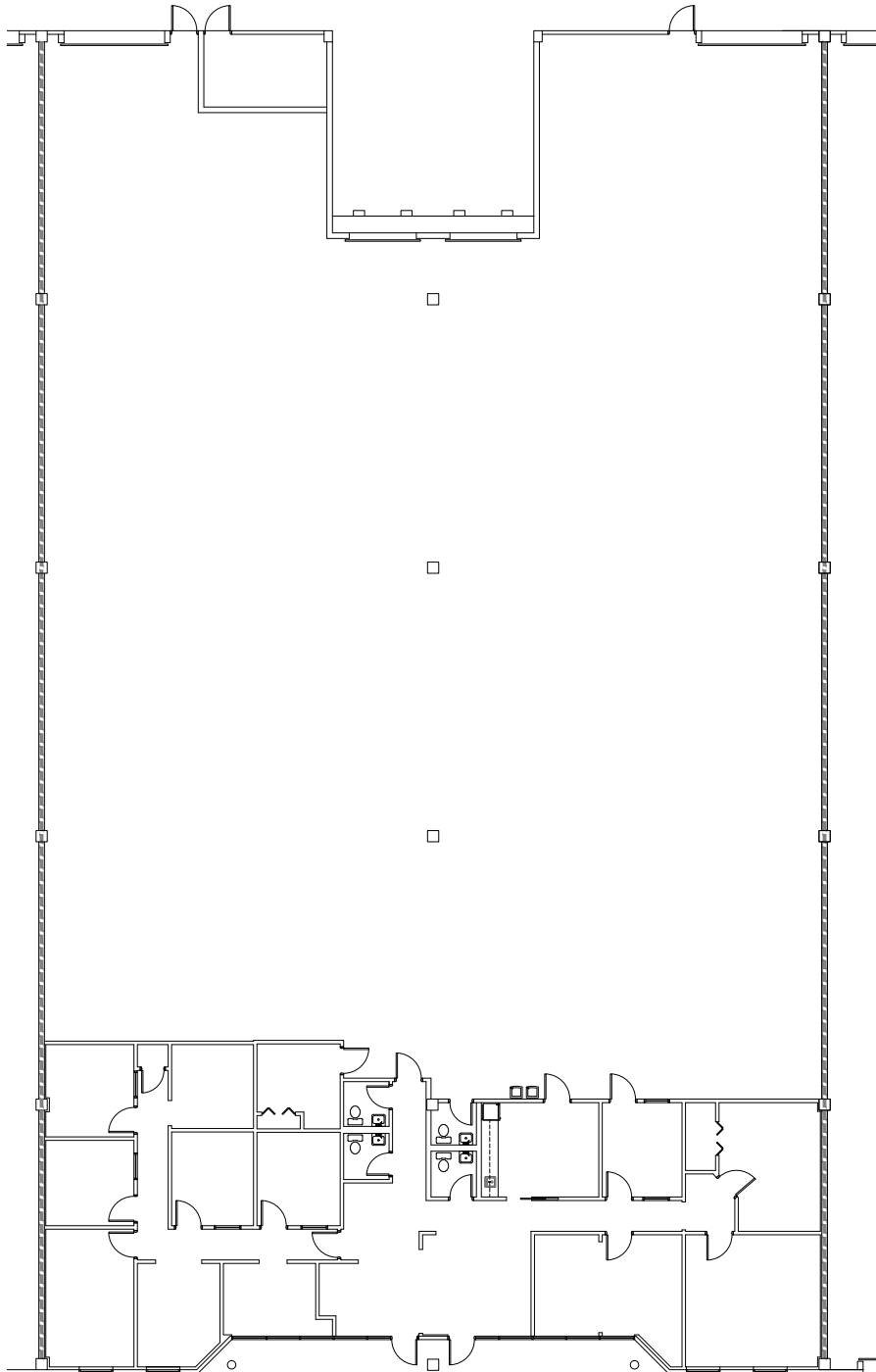
For Lease

Powerline Park 3

2280 - 2300 NW 30th Place, Pompano Beach, Florida 33069

Powerline Park 3 Floor Plan - Suites 3 & 4

Total: 15,000 SF
Warehouse: 11,904 SF
Office: 3,096 SF



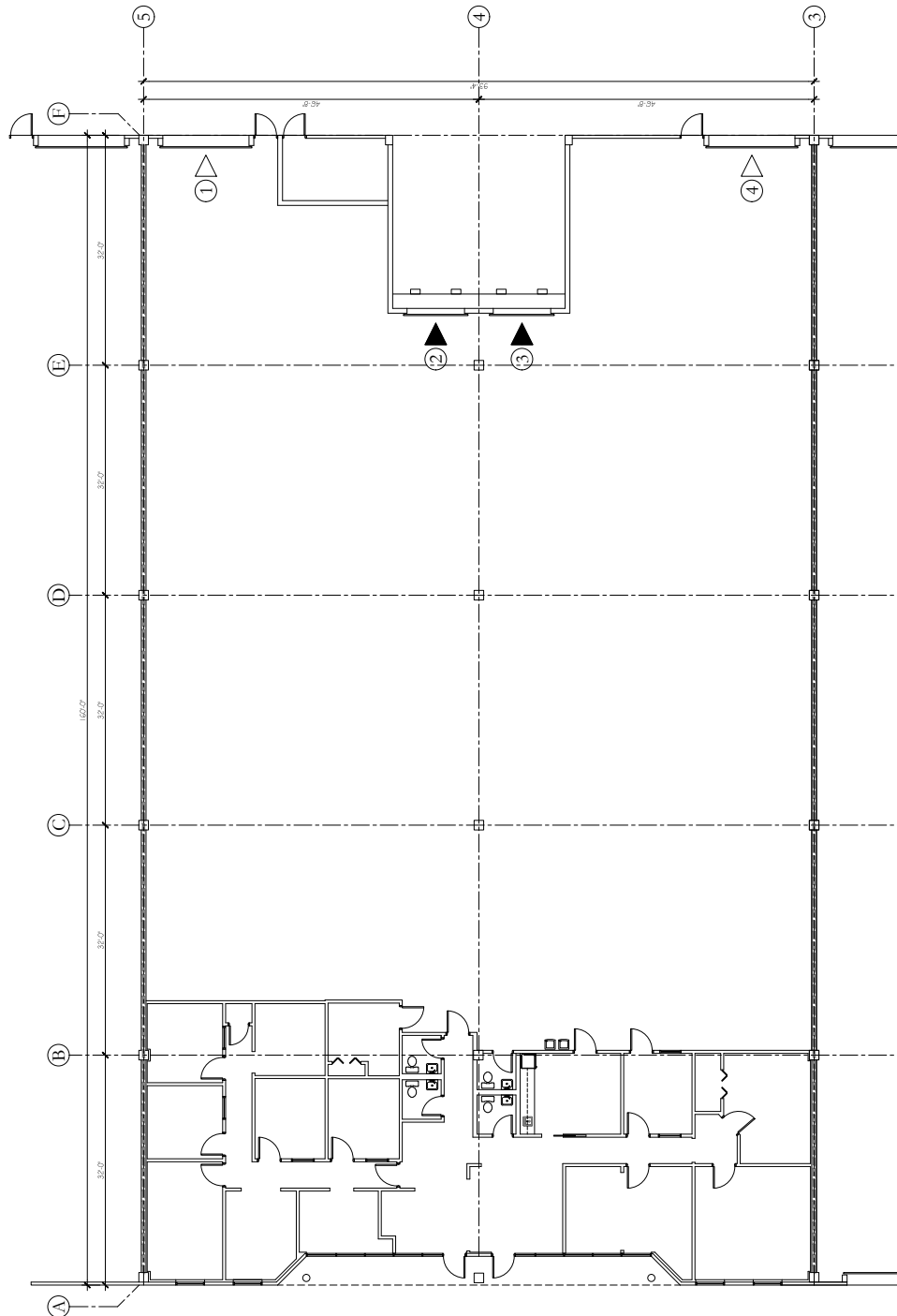
For Lease

Powerline Park 3

2280 - 2300 NW 30th Place, Pompano Beach, Florida 33069

Powerline Park 3 Floor Plan - Suites 3 & 4

Total: 15,000 SF
Warehouse: 11,904 SF
Office: 3,096 SF



For Lease

Powerline Park 3

2280 - 2300 NW 30th Place, Pompano Beach, Florida 33069

Powerline Park Site Plan

 - Subject Property



Building	Suite	Total (SF)	Warehouse (SF)	Office (SF)	Loading	Clear Height	Available Date
3	3 & 4	15,000	11,904	3,096	2 DH / 2 G	20'	8/1/2022

